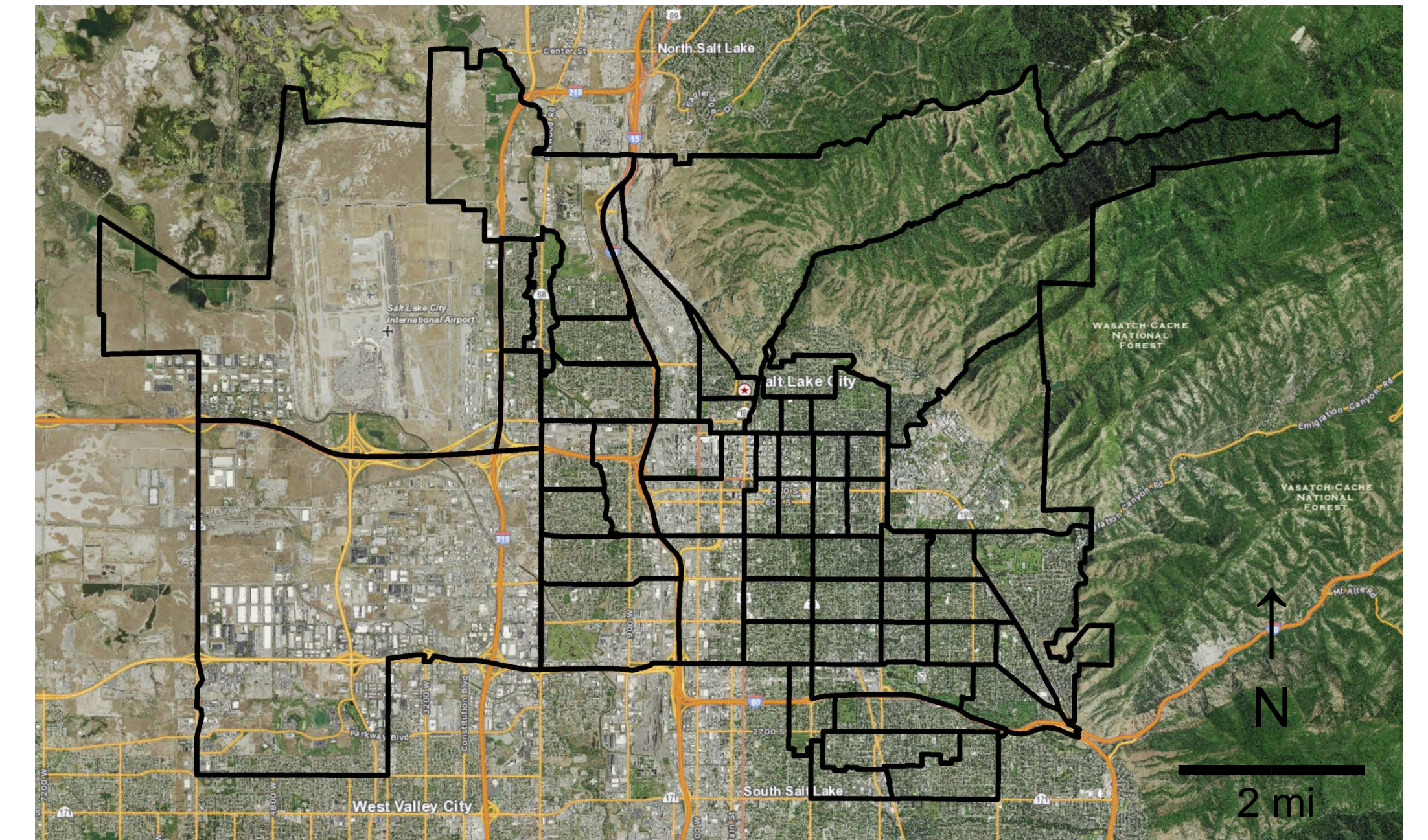
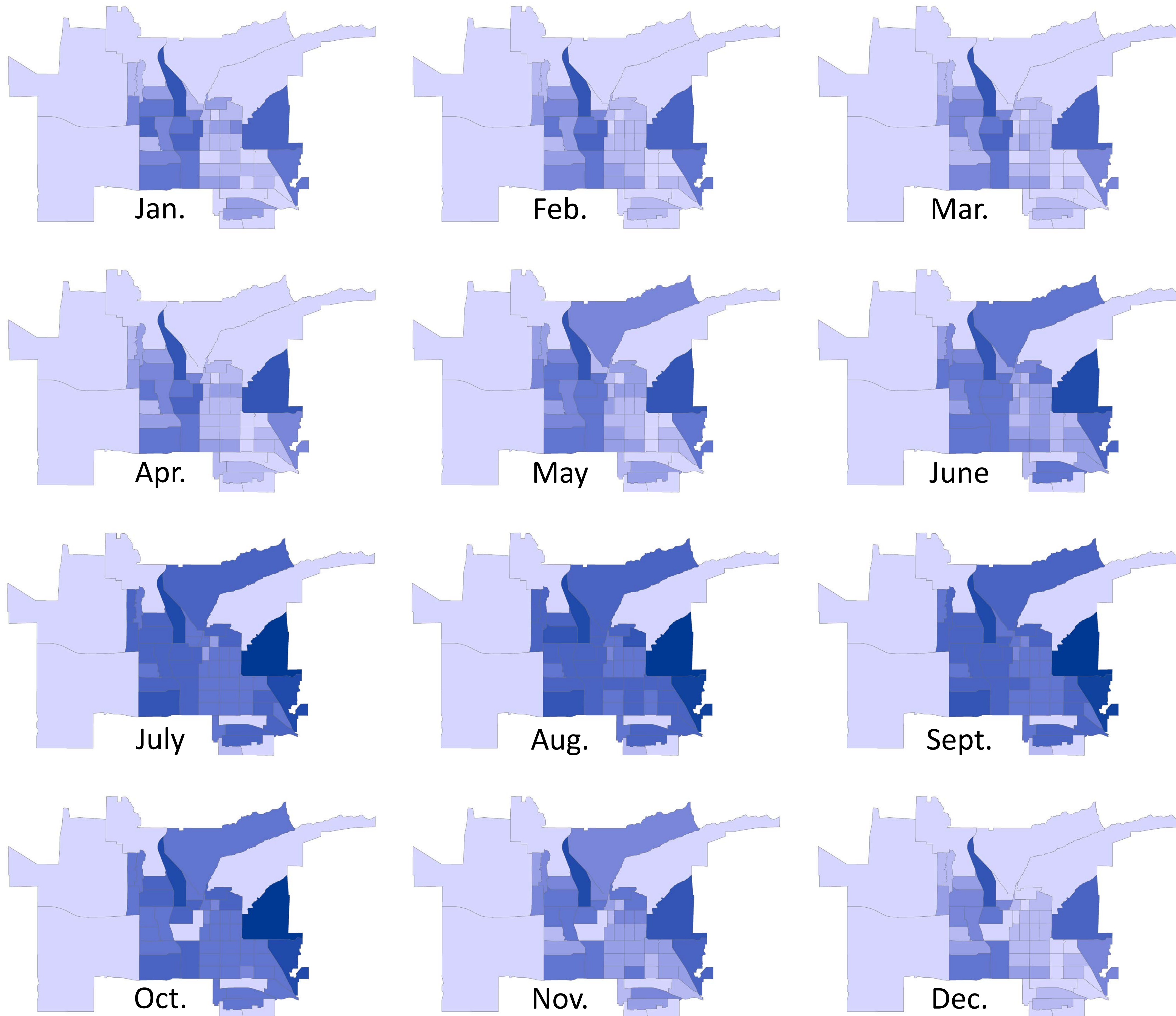


# How Salt Lake City's Water Use Varies in Time and Space

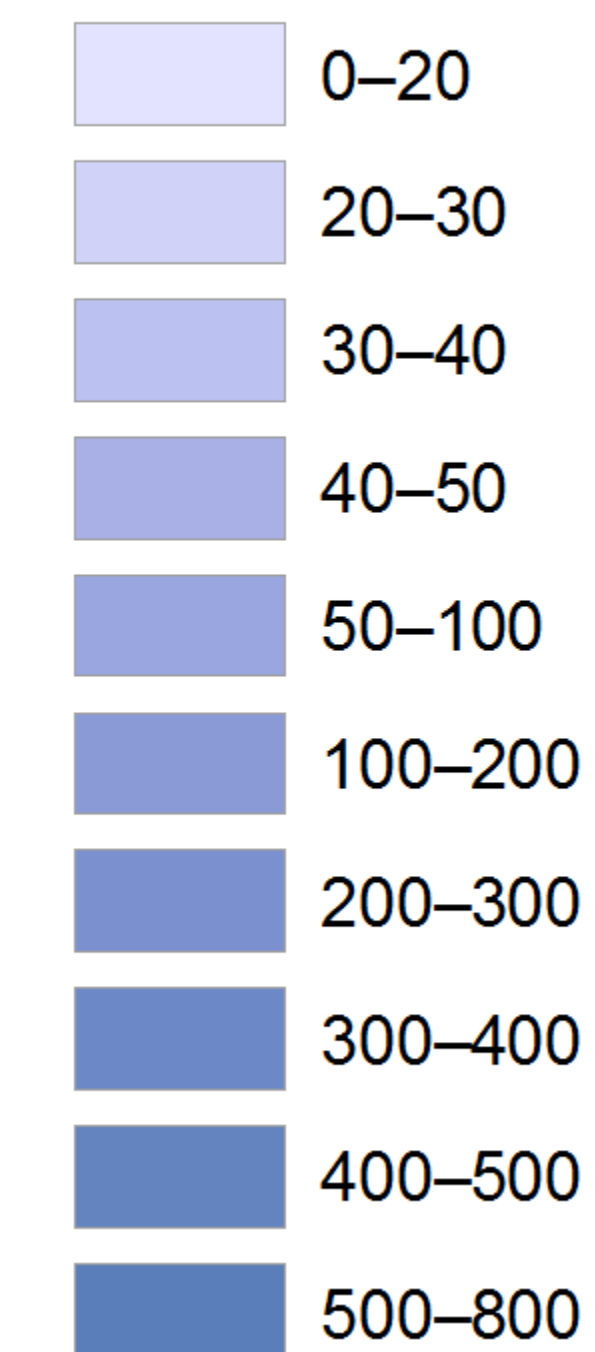
A temporal and spatial analysis of 2010 water use by census tract



The location, timing, and magnitude of water uses are important for planning water infrastructure and managing water resources. The maps here illustrate water use in Salt Lake City, Utah, during 2010. Each polygon is a census tract, and each hue represents a range of water use, increasing from light to dark.

The dark sliver at top center is a heavy-industrial area with relatively constant water use. The large semi-triangular patch at middle right is a university campus. At left are sparsely populated areas with light industry. Most other tracts are commercial and residential, with peak water use during the summer for landscape irrigation.

## Acre-Feet per Month



**Water data:**  
Utah Open Data Catalog. 2015. "Salt Lake City Water Consumption by Tract." Tabular dataset. <https://opendata.utah.gov/Energy-Environment/SALT-LAKE-CITY-WATER-CONSUMPTION-BY-TRACT/J4aa-ce7s>.

**Census tracts:**  
Utah Automated Geographic Reference Center. 2011. "2010 US Census Bureau Data: Census Blocks." GIS dataset. <http://gis.utah.gov/data/demographic/2010-census-data/>.

**Maps:**  
Robert B. Sowby / Hansen, Allen & Luce, Inc., Feb. 2016

